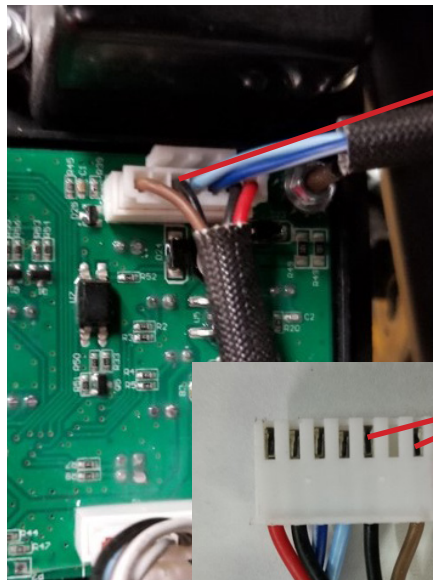
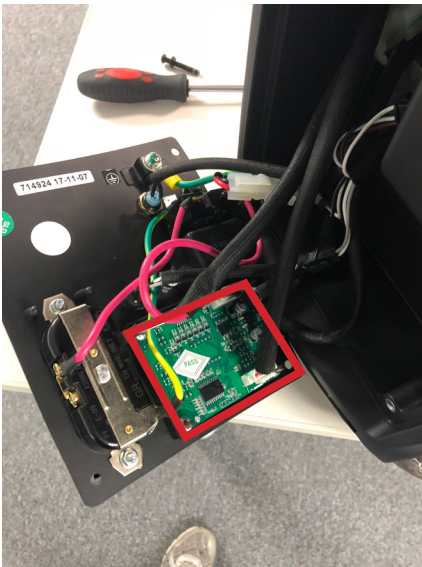


FUEL LEVEL SENSOR CONNECTIONS

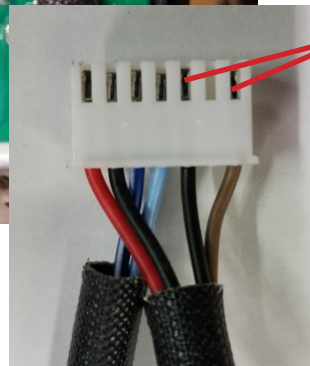
1. Remove the 4 screws in each corner of the control panel. Remove the screw in the middle of the engine switch.



2. Locate the green circuit board on the back of the control panel and the LED display connectors.



Black and brown wires are inputs to the digital display board from the fuel level sensor. Make sure that the connector is seated into the socket.

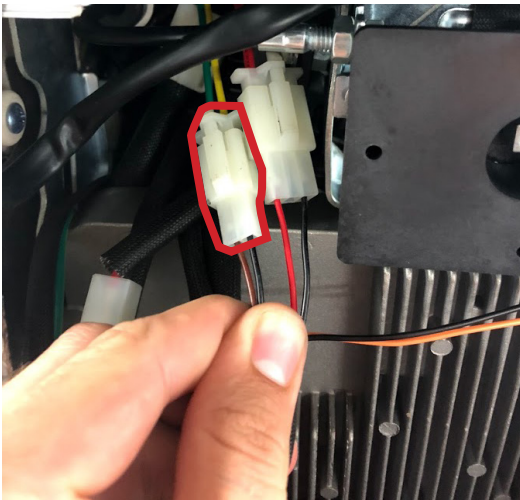


Inspect the conductor terminals, ensure that the terminals are seated inside the connector. Each terminal will be positioned at the same distance from the end of the connector.

3. If the connections in step 2 are correct and the issue persists, then you will need to check the fuel level sensor connector located behind control panel housing. To access this connector remove the two screws below the control panel and pull down on the plastic housing.



4. Confirm the connector below is fastened securely.



5. If the issue still persists then the fuel float may be stuck. Open up the fuel tank, remove the fuel strainer and use a long piece of metal to loosen the fuel float.

